



The Rivanna Regional Stormwater Education Partnership



County of Albemarle
296-5816



Albemarle County
Public Schools
975-9340



City of Charlottesville
970-3631



Rivanna Water and
Sewer Authority
977-2970



University of Virginia
982-4901



Virginia Department
of Transportation
(549) 829-7500

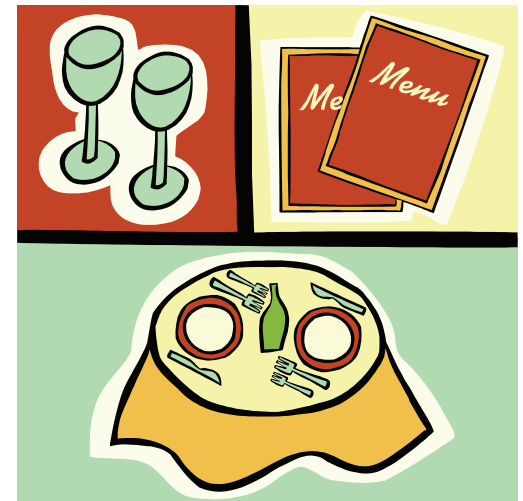


Thomas Jefferson
Soil & Water
Conservation District
975-0224

This brochure paid for in part by the sale of
Chesapeake Bay license plates.

The Food-Service Industry & Pollution Prevention

*Steps you can take to help
keep Virginia's waterways
healthy and clean*



www.rivanna-stormwater.org

Employee & Client Education

Employees can help prevent pollution when urban runoff training is included in employee orientations and reviews. Promote these Best Management Practices (BMPs) to insure compliance with federal, state, and local regulations.

- Stormdrains connect directly to state waters, including local streams and rivers, without treatment. Never dump anything down a stormdrain.
- Storage containers should be regularly inspected and kept in good condition.
- Place materials inside rigid, durable, water-tight, and rodent-proof containers with tight fitting covers.
- Store materials inside a building or build a covered area that is paved and designed to prevent runoff from entering storm drains.
- Post BMPs where employees and customers can see them. Showing customers you are working to protect local waterways is good public relations.



How can practices in the food-service industry impact local streams and rivers?

Virginia's waterways are a vital source of the clean water used in our daily lives - and are also important for recreational opportunities we want our children and their children to enjoy, such as swimming, fishing, boating, and hunting.

Restaurants and cafeterias generate food wastes and cleaning wastes. These wastes contain organics and nutrients that can pollute stormwater, which flows down stormdrains and into local waterways. These materials can cause algae blooms and deplete oxygen, harming fish and wildlife. Cleaners used during food handling operations can contain caustic materials that can harm aquatic life and degrade water quality. Pathogens from decaying food can also harm animals and humans. Federal, state, and local regulations prohibit activities which contribute pollutants to state waters.



Adopt these practices to help prevent pollution

Parking Lot Drainage

Cover, repair, or replace leaky dumpsters and compactors. Rain can wash oil, grease, and other substances from dumpsters into the storm drain system. Wash greasy equipment such as vents and fans before storing outside. Wash only in designated wash areas that are properly connected to the sewer system equipped with an appropriate oil/water separator.

Minimize Wastes

Use re-usable products. Serve food on ceramic dishware rather than paper, plastic, or styrofoam and use cloth napkins rather than paper ones. If you must use disposable products, use paper instead of styrofoam.

Toxic Disposal

Toxic waste must be disposed of properly. This includes used cleaners, rags (soaked with solvents, floor cleaners, and detergents).

Recycle the following materials:

- ♣ Food waste (non-greasy, non-animal food waste can be composted);
- ♣ Paper and cardboard;
- ♣ Container glass, aluminum and tin;
- ♣ Pallets and drums;
- ♣ Oil and grease.

Spills

Immediately clean up spills using dry methods. Do not rinse them down.

Clean Equipment Indoors

Clean floor mats, air vents, hoods, meat trays, garbage cans, and other equipment indoors at the mop sink or near a floor drain that is plumbed to the sanitary sewer. Portable equipment may also be cleaned in dishwashers or public car washes.



Do not clean floor mats, air vents, hoods, meat trays, garbage cans, and other equipment **outdoors**. Dispose of waste mop water in the mop sink, floor drain, or toilet. **Do not dump waste mop water** outdoors, in a parking lot, or down a stormdrain.

Recycle oil & grease wastes

Never dump them down storm drains, in parking lots, or on the ground. Maintain grease traps to insure proper functions.

Buy the Least Toxic Products Available

Look for "non-toxic," "non-petroleum based," "free of ammonia, phosphates, dye or perfume," or "readily biodegradable" on the label. Avoid chlorinated compounds, petroleum distillates, phenols, and formaldehyde. Use water-based products. Look for "recycled" and "recyclable" containers.